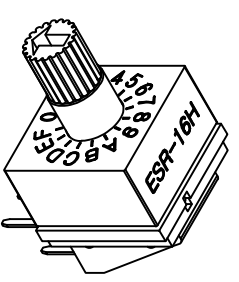
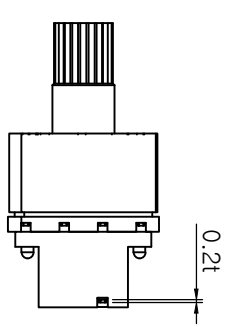
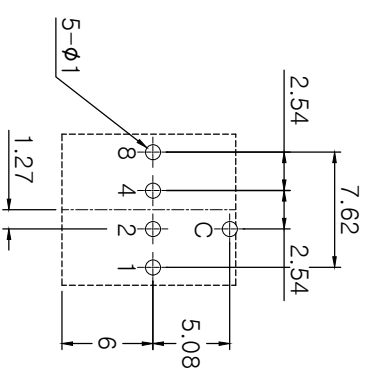
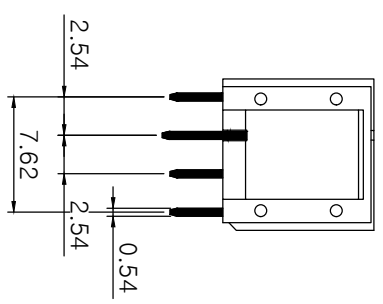
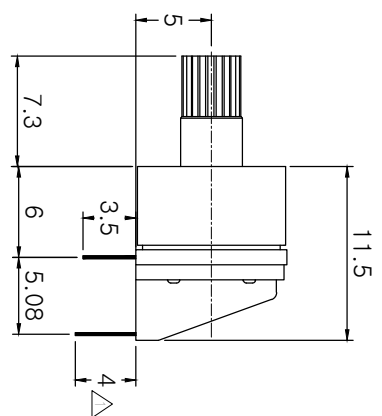
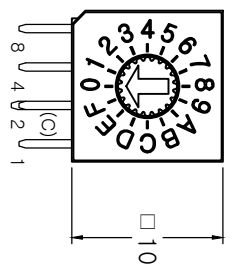
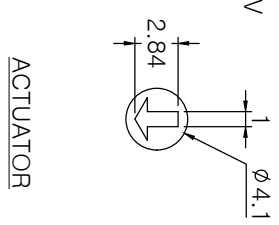


MRK.	DATE	REVISION	SIGN
△	21.12.14	Terminal Length 3.5mm --> 4mm	

SPECIFICATION

1. Rating : 150mA, DC 42V (Switching)
200mA, DC 42V (None-Switching)
2. Contact Resistance : 80mΩ Max
3. Insulation Resistance : 100MΩ Min at DC 250V
4. Operating Force : 700gf Max
5. Life cycle : 10,000 steps
6. Sealing : IP67 (Dust & Water proof)
7. Packing : 50pcs Tube



Position	Real Code															
	C	1	2	4	8											
0	●															
1	●	●														
2	●		●													
3	●			●												
4	●				●											
5	●					●										
6	●						●									
7	●							●								
8	●								●							
9	●									●						
10	●										●					
11	●											●				
12	●												●			
13	●													●		
14	●														●	
15	●															●

DRAW/DESIGNED	CHECKED	APPROVED	G.TOL		ROTARY DIP SWITCH	
JS YANG	WJ LEE	KI LEE	±0.3	SCALE	ESR-16H	
2021-12-14	2021-12-14	2021-12-14	mm	1:1	MODEL NO.	REV.
邦斯达 BONSUDA 深圳市子庚科技有限公司			SIZE	DRAW NO.	ESR-16H-04	04
			A4			

