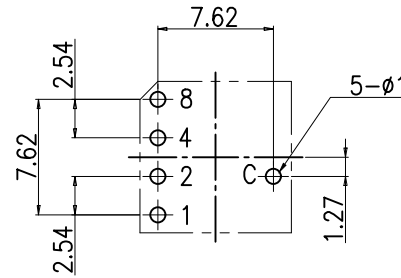


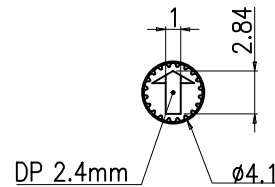
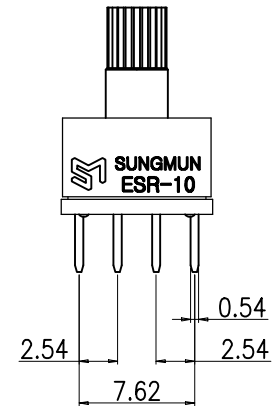
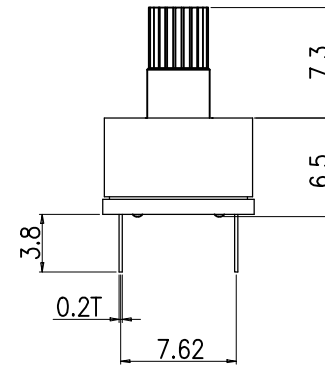
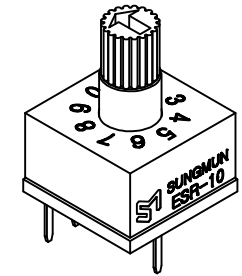
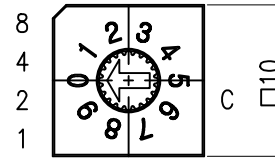
REV NO.	DATE	REVISION	DR	CH	APP
△					

SPECIFICATION

- Rating : 150mA, DC 42V (Switching)
200mA, DC 42V (None-Switching)
- Contact Resistance : 80mΩ Max
- Insulation Resistance : 100MΩ Min at DC 250V
- Operating Force : 700gf Max
- Life cycle : 10,000 steps
- Sealing : IP67 (Dust & Water proof)
- Packing : 50pcs Tube

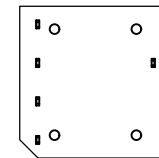


P.C.B DIMENSION (Top View)



ACTUATOR

		Real Coded					
		C	1	2	4	8	
10 P o s i t i o n	0	●					0
	1	●	●				1
	2	●		●			2
	3	●	●	●			3
	4	●			●		4
	5	●	●		●		5
	6	●		●	●		6
	7	●	●	●	●		7
	8	●				●	8
	9	●	●			●	9



Din ISO-2768-1m					
Ranges	0.5~3	3~6	6~30	30~120	120~400
Tolerance	±0.1	±0.1	±0.2	±0.3	±0.5

DRAW/DESIGNED	CHECKED	APPROVED	G.TOL	TITLE	ROTARY DIP SWITCH	
H.S LEE	K.N KIM	W. LEE	mm	SCALE	MODEL	REV.
2023-09-22	2023-09-22	2023-09-22	N:S	N:S	ESR-10	
邦斯达 BONS DA 深圳市子庚科技有限公司			SIZE	DRAW NO.	ESR-10(LG)-01	01
			A4			

