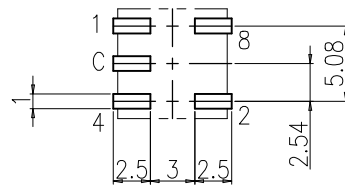


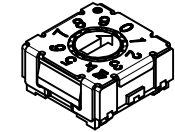
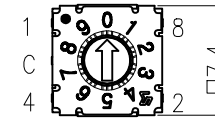
REV NO.	DATE	REVISION	DR	CH	APP
△					

SPECIFICATION

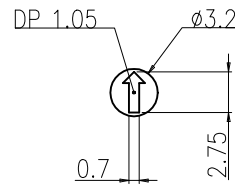
1. Rating : 100mA, DC 42V (Switching)
400mA, DC 42V (None-Switching)
2. Contact Resistance : 80mΩ Max
3. Insulation Resistance : 100MΩ Min at DC 250V
4. Operating Force : Max 250gf·cm
5. Life cycle : 25,000 steps
6. Sealing : IP67 (Dust & Water proof)
7. Packing : 70pcs Tube / 1,300pcs Reel Packing



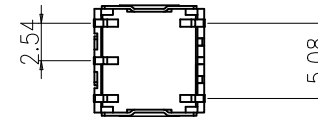
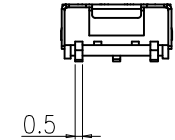
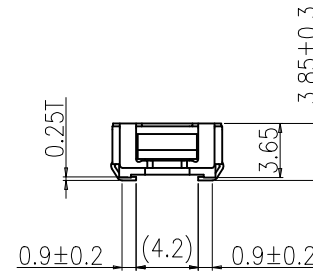
P.C.B DIMENSION (Top View)



10 P o s i t i o n	Real Coded					0
	C	1	2	4	8	
0	●					0
1	●	●				1
2	●		●			2
3	●	●	●			3
4	●			●		4
5	●	●		●		5
6	●		●	●		6
7	●	●	●	●		7
8	●				●	8
9	●	●			●	9



ACTUATOR



DRAW/DESIGNED	CHECKED	APPROVED	G:POL	TITLE	MINI ROTARY DIP SWITCH
W.R KYUNG	K.N KIM	W.J LEE	mm	SCALE	MSDR-10JC
2024-04-18			2024-04-18	2024-04-18	REV.
Din ISO-2768-1m			N-S		MODEL NO.
Ranges	0.5~3	3~6	6~30	30~120	120~400
Tolerance	±0.1	±0.1	±0.2	±0.3	±0.5
邦斯达 BONSUDA 深圳市子庚科技有限公司			SIZE	DRAW NO.	MSDR-10JC(LG)-01
			A4		01